

motivepower
ideas, implemented

10
6



Motive Power & Its ESG focused Family of Companies

Motive Power

Organizational Development Consulting

10/6 Professional Services

Capital Project Execution

NPUC

Research & Advisory

The Gulch Environmental Foundation

Non-Profit Carbon sequestration Projects

We are a *family of companies* working for a mission: to do *impactful work* and *make a difference*; undoubtedly, we are different.

Who We Are

WE DO WHAT WE SAY, AND WE SAY WHAT WE DO.

Environmental, Social, Governance Action



We understand these, advocate these, and are experts within our client engagements to help companies achieve their ESG targets and commitments.

Who We Are

WE EXECUTE ESG ACTION WITH OUR SUITE OF COMPANIES



Consulting on best process and architecting successful change adoption within to realize those processes



Hands on, on the ground **Capital Project Execution** for mega infrastructure projects and beyond with an eye toward decarbonization practices within



Research and Advisory services on decarbonization education and knowledge sharing amongst utilities



Actively doing it. Promoting drawdown through regenerative farming practices in the heartland of America

Who We Are

Our ESG Suite

Motive Power

10/6

Capital Project Delivery Consultation & Services

Change Adoption

Process
Optimization

Project Execution

NPUC

Decarbonization
Research & Thought
Leadership

Research,
Marketing and
Advisory

Non-Profit Work

Measurable Carbon Sequestration &
Underserved Group Advocacy

Gulch

BOC

Motive Power Incorporated

Woman-Owned Small Business (WOSB) founded in 2005.



Consulting services focused on the art and science of operational improvement



Focus on producing a positive impact and bright future for our people, clients, business partners, industries, and community



Specialize in Utilities & Transportation with experience in a variety of industries

Motive Power Incorporated

Motive Power is a family of unique individuals carrying one commonality—**our shared values.**

HOW WE WORK



Side by side
with our clients

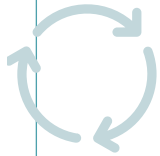


Build long-lasting
relationships



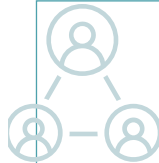
Foundation of honesty
and transparency

CORE CAPABILITIES



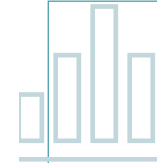
Process Improvement

- We develop and deploy both established and new processes, tools, systems, and structures to improve the efficiency of your organization.



Change Adoption

- The rigorous, systematic, people-centric discipline of ensuring individuals, groups and organizations transition from current state to the desired future state.



Data Innovation

- We utilize the power of data-driven decision-making to help businesses ask the right questions, discover solutions, and align strategies to goals

Motive Power

CAPACITY



We are growing! Currently employ roughly 100 W2 employees across 10 states



Prior to covid we held 7 offices located all over California, Minnesota and Washington DC.



Additionally, we are members of the We Work family and able to co locate with our clients in nearly any major city in the world

VALUE



Partnering rather than professionalizing



Our main objective is to empower our clients to move forward on their initiatives without further consulting help in that area



Honest, integrity and creativity define our work ethic and problem-solving approach while fearlessness and fun describe our working style

Qualifications

CLIENTS



MSA INFORMATION

Current **PG&E** and **Xcel Energy** Prime Multi Year MSA holder

Qualifications

BUSINESS CERTIFICATIONS

Motive Power is a Certified Woman-owned Business and holds a CPUC certification. Additionally, Motive Power is certified by the state of California DGS as a small business

Additional
Certifications

SIC: 7379,8741,8742,8748

NAICS: 523920,541611,541618,611430

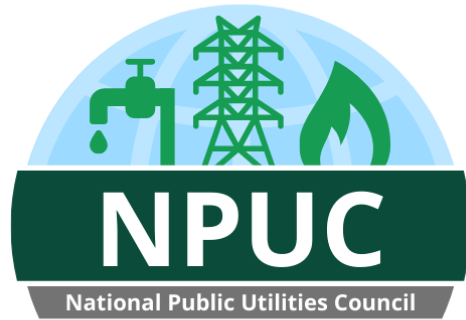
Formerly a PMI REP #3076

EMPLOYEES CERTIFICATIONS AND ACCOMPLISHMENTS

Our team is regularly published, produce podcasts and webinars and speak at prominent conferences for Change Management and Advanced Program Management and associated subject matter

- Employee Certifications
- PMI Project Management Profession (PMP)
- Prosci Change Management Practitioner
- Six Sigma Green & Black Belts
- Six Sigma Lean Professional
- Certified SCRUM Masters
- AACE Certified Cost Technicians
- AACE Certified Schedule Technicians
- Microsoft PowerBI certified
- Primavera Unifier certified
- MS Project certified
- Agile Certified Project Management Professionals
- P6 certified
- SQL certified

Our Additional ESG Organizations



National Public Utilities Council
[Motive-power.com/npuc/home](https://motive-power.com/npuc/home)



Gulch Environmental Foundation
Gulchfoundation.org

10/6 Professional Services

motivepower
ideas, implemented



10/6 Professional Services

WHO WE ARE



Help our clients deliver large, complex capital projects on time, on budget and in scope



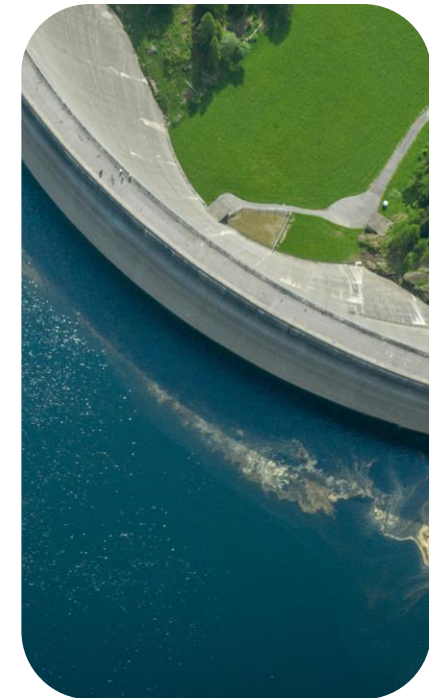
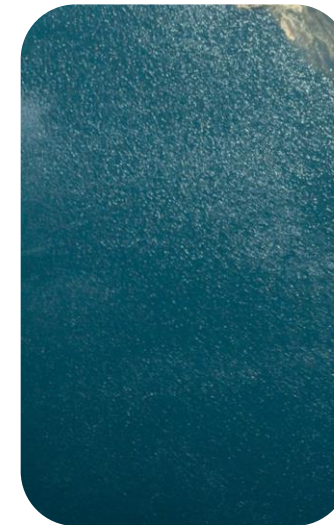
A company that values working together to improve performance for clients and for ourselves



Team approach: leveraging a pool of knowledge - Integrity, Fearlessness, and Fun



Moving the dial on climate change



How We Can Help

THE PROBLEM

Not getting things done

Missing deadlines and not meeting budgets

Lack of integration between projects

OUR SOLUTION

Additional resources (Capital Project Cost Controls, Schedulers, and Project Managers) with the right expertise to meet current, peak and future demands

Expert resources to lift the tide that raises all boats using a unique application of the art and science of project management

Program management resources to align priorities

Industries

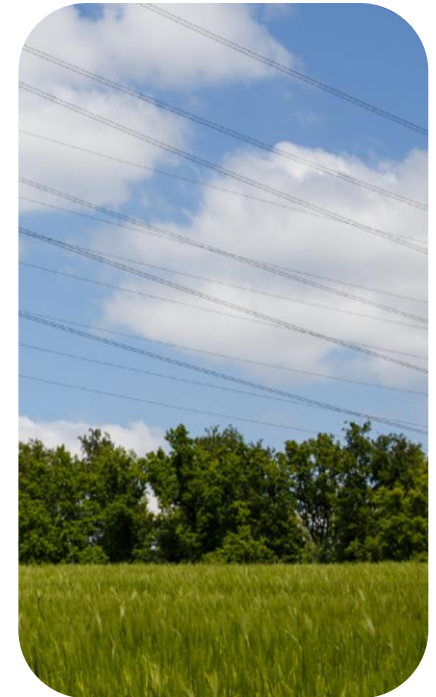
UTILITIES | INFRASTRUCTURE | TRANSPORTATION | CONSTRUCTION



Success Stories

ELECTRIC TRANSMISSION LINE

- Budget of \$193.2M
- 5 years to complete
- Faced numerous challenges:
 - Internal Staff moved in and out due to emergency conditions
 - Outside contractors came in and out
 - Resource and equipment challenges
 - Long-term relationship challenges
- Tight project cost controls and scheduling
- Strong relationships with both internal and external staff
- Reliable safety procedures
- Able to finish on time and within budget with no major safety-related incidents



The Team Supporting You

COMPANY CERTIFICATIONS

- WBE – Woman Owned Business Enterprise
- Project Management Institute (PMI) Project Management Professionals (PMP)
- Oracle P6
- Oracle Unifier
- Microsoft Certified Professionals in MS Server 2003 - 2010
- AACE Cost Professional
- AACE Schedule Professional

PERSONAL EXPERIENCE

- GE Aviation
- Consulting background with complex projects
- Why 10/6 is important to me
 - Saving lives
 - Saving the planet



Collaborating to Promote LGBTQ Businesses and Ally's

ACTIVE BOC MEMBER WORK

- Sandra Escalante – PG&E introduction
- Collaboration with Ghirardelli Associates on transportation opportunities
- Collaborating with nearly all the founding companies on LGBTQ advocacy through BuildOUT California

COLLABORATIONS

- Destination Enterprises
- Montez Group
- Gilbane
- Jacobs

Q&A

motivepower
ideas, implemented

10
6



In Conclusion

Woman-owned diverse company

Help clients deliver large, complex capital projects on-time, in-scope, and on-budget

Staff specialists in capital project controls, scheduling, and project management that have industry expertise, knowledge, training, and employ best practices

Provide managed, flexible, hard to find expertise and skill that can quickly fit into your organization

10/6 trains, ensures certifications, and manages all staff

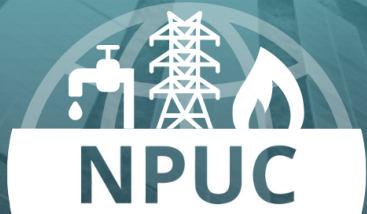
Next wave of high-performance cost/scheduling staff, addressing the issues with staff augmentation

Provide a consistent level of quality that meets our standards and whole company approach, *operating as a family*, rather than a body shop

Pro-climate Change Impactors

motivepower
ideas, implemented

10
6



Contact Us



Angel Lance

alance@motive-power.com

James Woolwine

j.woolwine@10-6.com

(415)302-0592



www.motive-power.com

www.10-6.com