



PRIDE

Resource Partners

Your Bridge to Success

PRESENTED BY:

Joe Maak, Pride CEO

Denis Sanford, Business Development Director

PREPARED FOR:



THE GOLDEN



PITCH / 2021



Company Overview

Premier CPUC-certified, LGBT-owned professional project management consultancy organization within regulated industries such as utility and transportation

ESTABLISHED

- 2015

EMPLOYEE COUNT

- 65

SERVICE TERRITORY

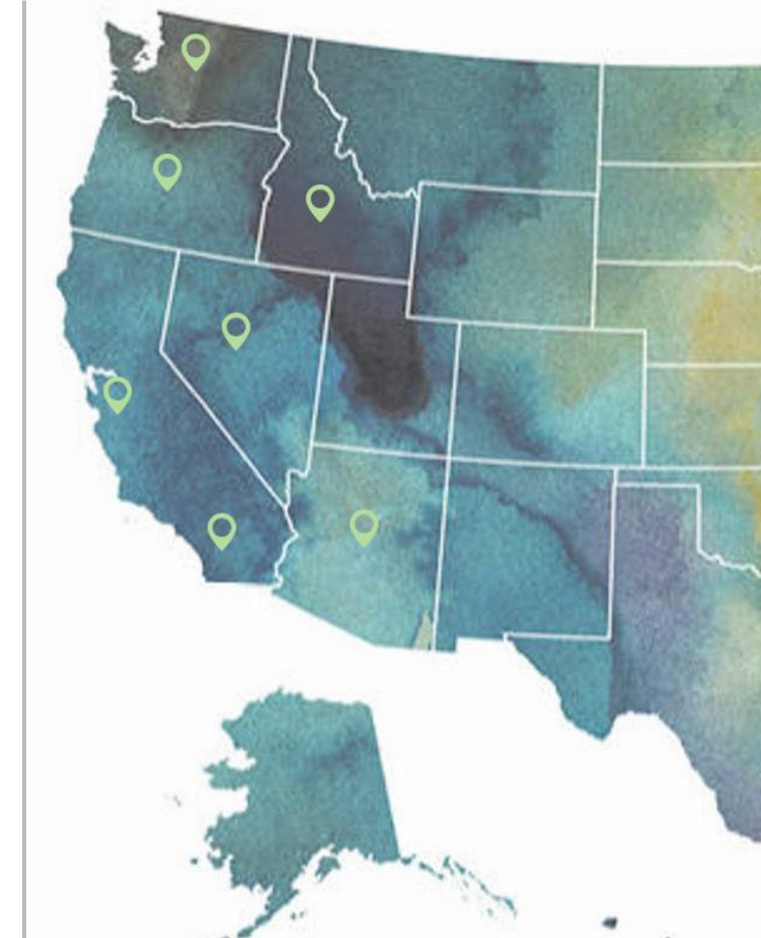
- California, Oregon, Washington, Arizona, Nevada, Idaho

OFFICE LOCATIONS

- Southern California: San Diego
- Northern California: San Ramon
- Idaho: Fruitland
- Michigan: Grand Rapids

DBE CERTIFICATIONS

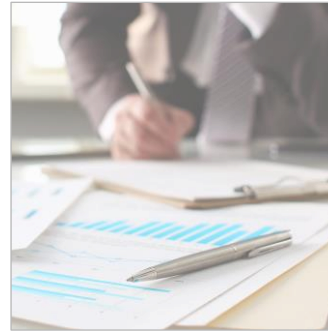
- LGBT-Owned – CPUC and NGLCC
- Small Business (SB-PW) – CA DGS
- Small Local Business – City of SD





Services

We manage and implement our clients' business-critical initiatives as a turn-key outsourced service provider with an innovative, integrated-partner approach



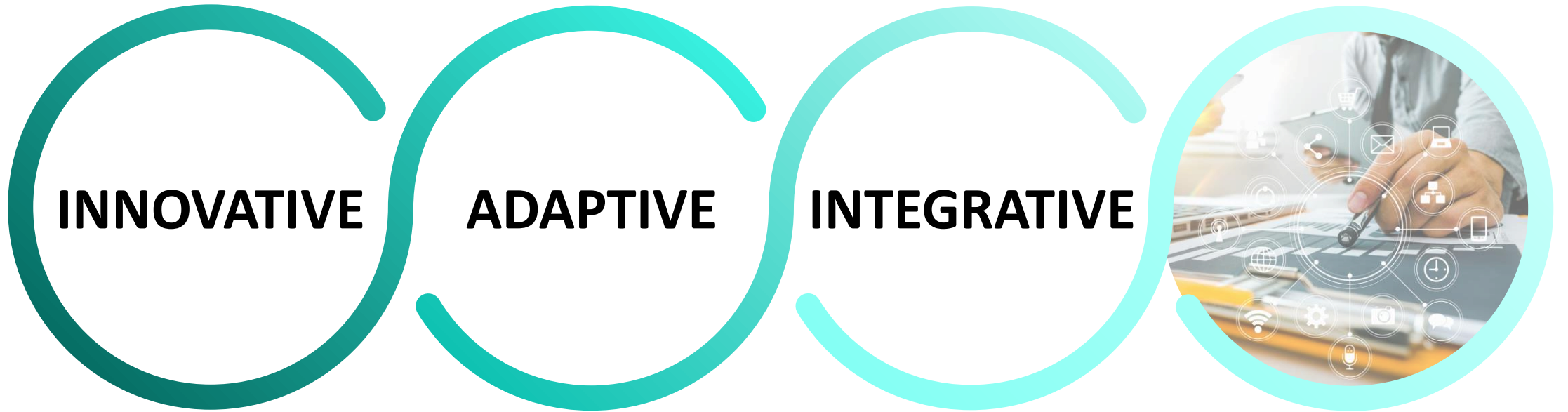
PROJECT & PORTFOLIO MANAGEMENT

- Program and project management
- Project controls and reporting
- Document management
- Schedule development and management
- Risk management



CONSTRUCTION MANAGEMENT

- Construction planning and oversight
- Cost management
- Quality management and inspection
- Safety management
- Material management





Why Pride

As an owner-representative for capital improvement projects, we have our clients' interests in mind

IMPECCABLE SAFETY

- Safety is our top priority
- ISNetworld "A" rating

TRIPLE-BOTTOM-LINE COMPANY

- Environmental sustainability
- Community involvement
- Financial responsibility

DIVERSITY

- CPUC-certified LGBTQ-owned business
- Diversity of thought leading to diversity of solution

INNOVATION PARTNER

- Adaptable to meet clients' innovation needs
- Leveraging advanced technologies (drones, AI/ML, SharePoint, CBRS, etc.)





SDG&E Portfolio Project Management

Pride has been successful in providing our professional consulting services on a variety of utility infrastructure capital projects



DESCRIPTION

- 40 to 60 individual, multi-year projects
- Annual budget of \$500M
- Transmission, distribution, substation, battery storage, and synchronous condensers

ACCOMPLISHMENTS

- Executed and delivered on time, with minimal operational impacts, in accordance with quality standards, within budget, and without incident
- Ramped up and ramped down staffing levels from one to thirty full-time resources. Quick ramp-up and ramp-down for workload demand (<2 weeks)

SERVICES

- Project management
- Construction management
- Project coordination
- Project controls
- Document control
- Scheduling
- Program analytics
- Business analyst
- Cost analyst
- Cost accounting and reporting
- QA/QC field inspection



PG&E Transmission Drone Inspection

Pride has been at the forefront of wildfire mitigation initiatives, including inspection of utility infrastructure for WMP compliance

DESCRIPTION

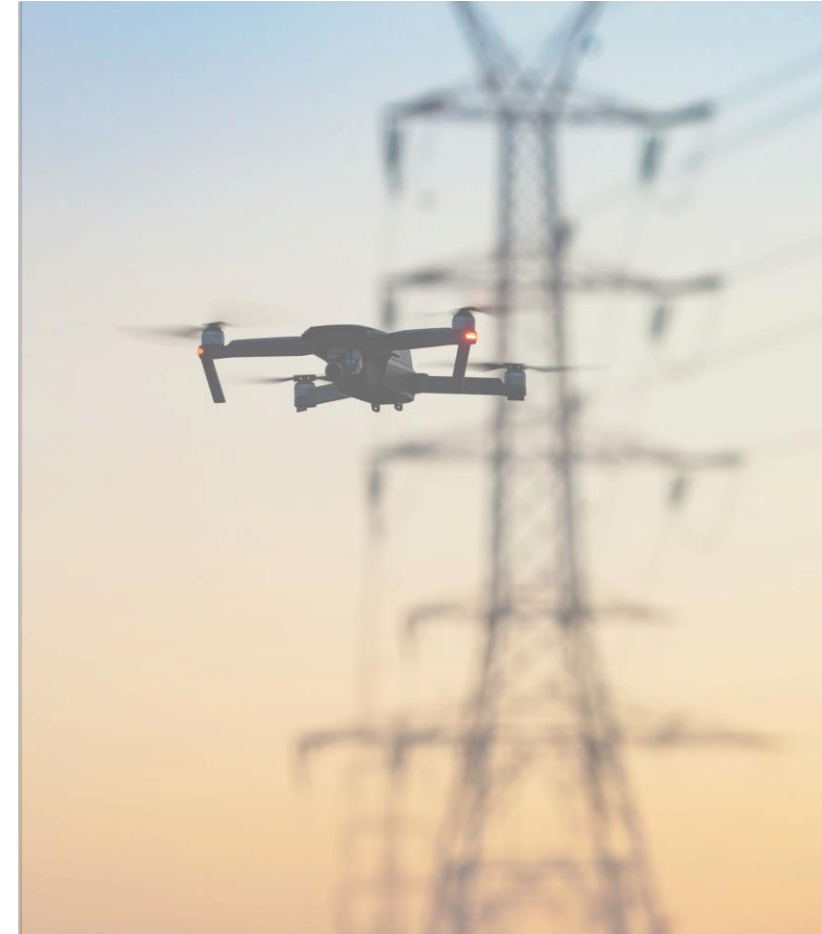
- Desktop inspection of drone and helicopter aerial footage of electric transmission structures

SERVICES

- QA/QC inspection, analysis, evaluation, reporting
- Subject matter experts, electrical professionals, linemen, engineers

ACCOMPLISHMENTS

- Pride is one of the top-performing inspection companies on the program according to PG&E
- Our nonunion QEWs and engineers completed over 15,000 desktop inspections in 2019 and over 11,000 desktop inspections in 2020





Key Clients and Partners

Pride and its partners have successfully executed a range of services with a high degree of quality, integrity, and safety on complex programs for our clients



KEY CLIENTS

- San Diego Gas & Electric*
- Southern California Edison
- Southern California Gas*
- Pacific Gas & Electric*
- California American Water*
- Pendergast Consulting Group
- Facebook
- BART



KEY INNOVATION PARTNERS

- Kelly Telecom / NextGen / GTA (CBRS / private LTE / network services)
- Global GreenWorx, IBM, and Flir (Vegetation management AI/ML)
- SUNA (Vendor management system)



Looking Forward...

- Invite Pride to bid on RFPs related to our service offerings
 - Construction management
 - Project management
 - Staff augmentation
- Arrange introductions with key stakeholders
 - In your organization
 - Transportation
 - Utilities / telecom

